



**Nederlandse Onderzoeksschool Wijsbegeerte
(OZSW)**

Dutch Research School of Philosophy

Annual Report 2015

Compiled by: Christine Boshuijzen

Contents

Summary	5
1. Introduction	7
2. Organisation and Membership	8
2.1 Organisation.....	8
2.2 Members.....	8
3. Important Developments.....	10
3.1 OZSW Sections	10
3.2 Website and Mailing Lists	10
3.3 ReMa Students Policy	11
3.4 PhD Council.....	11
3.5 Office.....	11
3.6 Quality Assurance	12
4. Educational Program.....	13
4.1 Overview of All Educational Activities	13
4.2 Educational Activities for PhD and Research Master Students	14
4.3 Additional Information on Educational Activities	15
4.4 Final Remarks	16
5. Research Collaboration and Outreach.....	17
5.1 OZSW Study Groups.....	17
5.2 OZSW Annual Conference.....	17
5.3 Outreach Activities.....	18
6. Quality Assurance	20
6.1 Course Evaluations.....	20
6.2 Mid-term Evaluation	20
6.3 LOGOS Evaluation	20
7. Finances	21
7.1 General.....	21
7.2 Financial Statement	21
7.3 Extra Costs.....	21
7.4 Budget Plans for 2016-2017.....	21
8. Conclusion and Future Vistas.....	22

Summary

The Dutch Research School of Philosophy (Onderzoekschool Wijsbegeerte – OZSW) is a collaborative enterprise of the philosophy departments and faculties of 11 Dutch universities. Its general purpose is to strengthen the discipline of academic philosophy by (a) organizing courses, summer/winter schools and other types of research training for PhD and Research Master (ReMa) students, and (b) facilitating and encouraging national and international cooperation between researchers active within the field of academic philosophy.

The OZSW was established at the end of 2012, and started its operations in January 2013. The OZSW comprises the former Netherlands School for Research in Practical Philosophy (OZSE), which has become the OZSW section 'Ethics and Practical Philosophy'. The other two OZSW sections are 'History of Philosophy' and 'Theoretical Philosophy'.

Erasmus University Rotterdam is the hosting university for the OZSW and its Office for the period 2012-2017. At Erasmus University, Han van Ruler has functioned as scientific director of the OZSW since the spring of 2014.

In 2015, OZSW policies have been aimed at a further harmonisation of the educational programs of the various sections, at encouraging ReMa students to exchange and/or participate in OZSW courses, and at designing and implementing a sound evaluation scheme for OZSW courses. At the same time, the OZSW continued to promote and support philosophical research and to add to its visibility in the Netherlands.

During the year 2015, the OZSW office went through several changes with regard to its staff, in particular the sad loss of our secretary Lizzy Patilaya.

Over the course of 2015, the OZSW has continued to grow in terms of size, activities and visibility. At the end of 2015, the OZSW had 622 members: 136 Research Master student members, 181 PhD student members, 293 senior members, and 12 international members.

One of the main efforts in 2015 was to bring the various OZSW sections to an understanding of the importance of organizing a number of similar and recurrent activities, with a view to shaping the contours of a recognizable course program throughout the year. Two further issues that demanded a substantial amount of effort were inspired by national higher education policies. First, the Dutch Committee for the Future of the Humanities requested a draft for establishing new research quality indicators. Second, national policy makers invited scientists as well as society at large to contribute to the National *Wetenschapsagenda*, or Science Agenda. Input was given by a variety of OZSW members and coordinated by OZSW president Anthonie Meijers. Finally, the OZSW presented a self-evaluation in 2015 in order to join the evaluation for research schools in the humanities by the *Disciplineoverleg Letteren en Geesteswetenschappen* (DLG).

During the year, multiple educational activities have been organized under the umbrella of the OZSW: 13 courses, a variety of winter/summer schools, a graduate conference, workshops and seminars. The number of participants in these activities (excluding the Annual Conference) amounted to 203 PhD students and 42 Research master students.

In 2015, the number of OZSW study groups has increased with the establishment of new study groups on a variety of topics. Study groups have organized research-related activities in which all OZSW members could participate, such as seminars and reading groups. Eight study group grants were awarded, which allowed study groups to invite international guest speakers or to organize full day workshops.

In December 2015, the third OZSW Annual Conference took place at the Vrije Universiteit Amsterdam. Key note speakers were Johan van Benthem (Logic), Sarah Broadie (History of Philosophy), John Broome (Ethics and Practical Philosophy) and Katherine Hawley (Theoretical Philosophy). This third edition of the conference further contributed to the recognizability of the OZSW as an established organization, and greatly added to the community spirit amongst academic philosophers in the Netherlands, despite the great disparity of fields, schools and traditions within the discipline of philosophy.

Financially, the OZSW has made an extra investment for the sake of promoting activities in the sections Theoretical Philosophy and History of Philosophy. The budget for this was not entirely spent, however. Towards the end of the year, it became clear that the OZSW would receive a compensation for ReMa office costs from the *Regieorgaan Duurzame Geesteswetenschappen*. As a consequence, instead of the anticipated use of 15%, the OZSW added 10% to the OZSE/OZSW reserves.

On all of these topics, further details may be found in the sections that follow.

1. Introduction

The Dutch Research School of Philosophy (*Onderzoekschool Wijsbegeerte* – OZSW) is a joint enterprise of 11 Dutch philosophy departments and faculties. These are:

- *Delft University of Technology* (Fac. of Technology, Policy & Management, [Philosophy Section](#))
- *Eindhoven Univ. of Technology* (Fac. of Ind. Eng. & Innovation Sciences, [Section Philosophy & Ethics](#))
- *Erasmus University Rotterdam* ([Faculty of Philosophy](#))
- *Vrije Universiteit Amsterdam* ([Faculty of Humanities, Philosophy Department](#))
- *Leiden University* (Faculty of Humanities, [Institute for Philosophy](#))
- *Radboud University Nijmegen* ([Faculty of Philosophy, Theology & Religion Studies](#))
- *Tilburg University* (Tilburg School of Humanities, [Department of Philosophy](#))
- *Twente University* (Faculty of Behavioral, Management and Social Sciences, [Philosophy Department](#))
- *University of Amsterdam* ([Faculty of Humanities](#))
- *University of Groningen* ([Faculty of Philosophy](#))
- *Utrecht University* (Faculty of Humanities, [Department of Philosophy and Religious Studies](#))

The OZSW was established at the end of 2012 by the deans of the 11 faculties involved, and started its operations in January 2013. The hosting institution (*penvoerder*) will be Erasmus University Rotterdam for the period 2013-2017. The OZSW comprises the former Netherlands School for Research in Practical Philosophy (OZSE), which has become one of the three sections of the OZSW (see chapter 2).

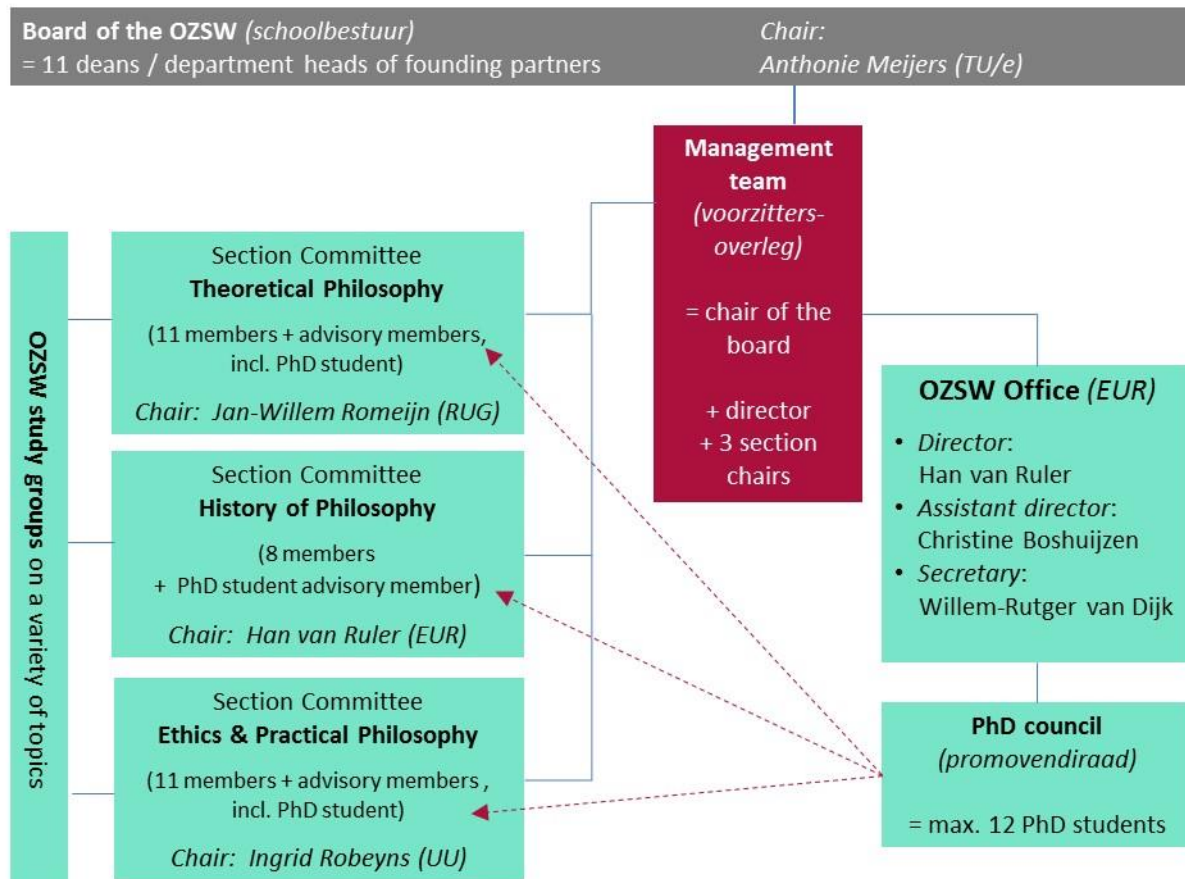
The general purpose of the OZSW is to strengthen the discipline of philosophy. It does so by:

- Organizing courses, summer/winter schools and other types of research training for PhD students and Research Master (ReMa) students;
- Facilitating and encouraging national and international cooperation between researchers active in the field of academic philosophy.

2. Organisation and Membership

2.1 Organisation

The following organogram depicts the organization in 2015:



2.2 Members

At the end of 2015 the OZSW had 609 members, see the table below.

	2014	2015
Total Members	552	609
Research Master Students	126	136
PhD Students	148	169
Regular members	237	265
Regular other faculty/university	21	21
Associate members	4	6
International members	8	12

OZSW Membership in 2014 and 2015.

The members can be categorized as follows:

Per partner university	Per type	Per OZSW section*
29 Delft University of Technology	265 regular members (OZSW faculty)	142 E&PP
18 Eindhoven University of Technology	21 regular members (other faculty/university)	59 HoP
48 Erasmus University Rotterdam	169 PhD student members	111 TF
40 VU University Amsterdam	6 Associated members	
27 Leiden University	12 international members	
37 Radboud University Nijmegen		
33 Tilburg University		
16 Twente University		
53 University of Amsterdam		
46 University of Groningen		
77 Utrecht University		

*some members even joined 2 or 3 sections.

Free membership applies to all faculty members of the 11 founding partners. Other senior researchers in academic philosophy have to pay a membership fee, but their PhD students may subsequently join for free. In 2014, the reduced fee membership option of Associated Member was offered to scholars who do not bring in any PhD students.

More information on membership types and benefits may be found at:

<http://www.ozsw.nl/membership-types-fees/>.

3. Important Developments

Chapters 4 and 5 will describe the activities organized within or supported by the OZSW. This chapter will sketch some general developments.

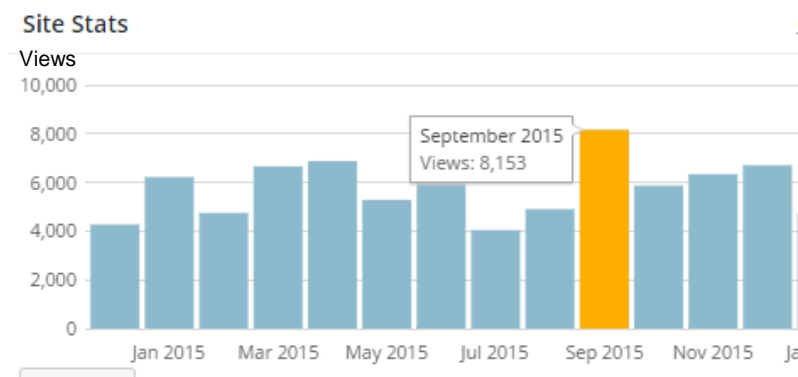
3.1 OZSW Sections

The OZSW section Ethics and Practical Philosophy (chaired by Ingrid Robeyns) is a continuation of the former OZSE. In 2015, it organized the customary full range of activities. Even some new courses were added to the program in 2015. The section History of Philosophy (chaired by Han van Ruler) initiated a number of novel activities in 2015, such as a symposium and course on Female Philosophers. The section Theoretical Philosophy (chaired by Jan-Willem Romeijn) continued its annual *Graduate Conference in Theoretical Philosophy* (GCTP). This year's GCTP was successfully organized by the Radboud University Nijmegen, drawing about 100 participants from all over the world. At the end of 2015, Mieke Boon took over the position of Jan-Willem Romeijn and will act as section chair for the coming years.

Members of the section committees committed themselves in 2015 to structure future events in such a way that the various departments represented in the section would all take responsibility in organizing a yearly program of PhD-Courses, summer schools and masterclasses.

3.2 Website and Mailing Lists

The website was maintained and slightly rearranged in 2015. The website was well visited, with a maximum of 8153 views in the month of September 2015.



A new plug-in for the event calendar was added to the website. Thijs Heijmeskamp, an Erasmus University student assistant, sees to it that the calendar includes all academic events in philosophy in the Netherlands as advertised on Filos-NL, as well as further OZSW events. The website is continually updated with information on OZSW courses, ReMa courses at OZSW universities, as well as with an overview of upcoming doctoral thesis defences.

Several mailing lists are in operation that facilitate communication within the various groups of OZSW members (e.g. among PhD students or the members of a section), or between members of a specific group within OZSW (mailing lists for section committees, and on request for study groups). Courses and events are also announced at Filos-NL and Philos-L mailinglists.

3.3 ReMa Students Policy

National Research Master (ReMa) policies are constantly changing, which causes a lack of clear guidelines on the financial and organizational aspects of ReMa activities. At the end of 2015, it was decided that the OZSW will continue to receive funding from *Regieorgaan Duurzame Geesteswetenschappen* for organizing ReMa student activities. The amount of funding will depend on the amount of European Credits (EC's) awarded to individual ReMa students. Initially it was decided that for each ReMa student who follows courses to the equivalent of 5 EC's, the OZSW would receive a €250,- personal budget per student as funding for ReMa activities. Since many ReMa students follow OZSW courses for less than 5 EC's, it has been decided that the OZSW will receive a partial grant. The OZSW Office has accordingly established procedures to track the amount of EC's awarded to each individual student.

The OZSW has a leading position in providing an overview of all ReMa courses in philosophy and bringing ReMa course coordinators together under the umbrella of OZSW. This is reflected on the OZSW website by the special sections that have been set up with a view to providing information for ReMa students. This information is being updated every semester.

The OZSW also supports and enables easy exchange between ReMa courses. In 2015, the OZSW developed a webpage that allows ReMa students to sign up for courses at other universities than their home universities.

The fourth ReMa Autumn/Winter School was organized in January 2016 at Utrecht University. The OZSW Research master Autumn/Winter School is now an established event in which ReMa students from several faculties participate. ReMa students also participated in several other activities organized by the OZSW (see § 5.2).

3.4 PhD Council

Over the course of 2015, the composition of the PhD Council has changed, due to the fact that various members graduated. New candidates for the OZSW PhD Council had to be recruited from all three sections. Marjolein Lanzing took over the position of chair in 2015. In 2015 the PhD Council organized a very successful event dedicated to "Career Perspectives for PhD candidates". Associated to this event were successful efforts from the PhD council to bring the BKO (Basic Teaching Qualification) on the agenda of the OZSW board.

The PhD Council presented themselves to the OZSW at large at the Annual Conference in Amsterdam. The Council aims to emphasize the importance of good supervision, for which it hands out the Best Supervisor Award. This year, the prize was awarded to Maarten Franssen.

3.5 Office

In 2015, the OZSW Office operated at Erasmus University Rotterdam for the second year. The Office underwent a number of personnel changes in 2015. Between April and July, assistant director Christine Boshuijzen was replaced by Myrthe van Nus, for reasons of parental leave. In May, the OZSW was confronted with the sad passing away of secretary Lizzy Patilaya. Thanks to the efforts of Myrthe van Nus, who for some weeks had to take up both coordination and secretarial tasks, the OZSW was able to continue its operations. Willem Rutger van Dijk took up the position of managerial assistant from June onwards and in October Roel Visser joined the OZSW Office as second managerial assistant. Han van Ruler remained scientific director throughout 2015. Thijs Heijmeskamp was responsible for the event calendar. Thanks to the hard work of the relatively young and inexperienced new people, the OZSW continued to grow in both members and activities, despite the unforeseen changes.

3.6 Quality Assurance

Under the new guidelines for research schools, the OZSW has taken steps to participate in an evaluation according to the Standard Evaluation Protocol (SEP). The assessment has to be done within the research unit that acts as the lead unit for the research school, which, in the case of the OZSW, is the Faculty of Philosophy at Erasmus University Rotterdam. The faculty performed a mid-term SEP evaluation in 2015. The OZSW contributed to the mid-term evaluation in order to provide the prospective hosting university after 2017 with a document that may serve as the basis for a full evaluation.

Quality assessment was also done through a self-assessment in the context of the LOGOS (*Landelijk Overleg Geesteswetenschappelijke Onderzoeksscholen*) / DLG terms for the continuation of research schools in the humanities.

4. Educational Program

4.1 Overview of All Educational Activities

The majority of OZSW educational activities are initiated and organized by the members of the respective OZSW sections (History of Philosophy, Theoretical Philosophy and Ethics and Practical Philosophy). In addition, the PhD council organizes educational activities and local ReMa coordinators organize educational activities under the umbrella of OZSW. In the tables below (Figure 1 and Figure 2), a summary may be found of all activities that formed part of the OZSW educational program over the past year – 11 in total.

These included:

- *Courses*: typically but not always of a length of five or six days spread over two months, taking place at the organizing university;
- *Schools*: events of three to five days at a stretch, held at an external location;
- *Graduate conferences and workshops*: one to three day events in which the emphasis is on students presenting their own work;
- *Seminars, Workshops and Masterclasses*: minor events, often organized by the PhD council

The tables mention the section and university responsible for coordinating the course. It should be noted however, that staff members of other universities often also contribute as co-organisers or guest lecturers.

The number of student participants in OZSW activities in 2015 was as follows:

Student participants in OZSW activities (excluding Annual Conference):

91 OZSW PhD students	112 PhD student (non-members)	Total: 203
36 OZSW ReMa students	6 ReMa students (non-members)	Total: 42

Student participants in OZSW activities (including Annual Conference):

140 OZSW PhD students	151 PhD student (non-members)	Total: 291
60 OZSW ReMa students	6 ReMa student (non-members)	Total: 66

This excludes participation in the activities of OZSW study groups (see § 5.1), which are in principle open to participation by students as well.

The next sections will provide further details on some of these activities.

4.2 Educational Activities for PhD and Research Master Students

	Title	Section	Dates	Type	PhD Stud	Research master Stud	EC	Location	Institute
1	3rd Annual OZSW Conference	OZSW	11-12 Dec	Conference	49(39)	24	n/a	Amsterdam	
2	Philosophy of Responsible Innovation	EPF	17, 20 & 24 Nov, 3, 7 & 16 Dec	Course	5(9)	0	5	various locations	
3	Philosophy of Risk	EPF	2, 3, 4, 5 & 6 Nov	Course	6(2)	0	5	Eindhoven	
4	Women Philosophers From Antiquity Until the 21th Century	HP	18 & 25 Sep & 2,9 & 16 Oct	Course	3(3)	3(3)		Amsterdam	
5	Diversifying Philosophy. Recent Trends in Feminist Thought	HP	11 & 12 Sep	Symposium	1(48)	3(3)	n/a	Amsterdam	
6	Emotions and Moral Agency	EPF	25-28 Aug	summer school	4(20)	0	5	Rotterdam	
7	Neurophilosophy: Self, Science and Society	TP	10-14 Aug	Summer School	-	-	2	Nijmegen	
8	OZSW Summer School Collegium Spinozanum	HP	7-10 Jul	Summer School	29	8		Groningen	
9	Theoretical Philosophy	TP	29 Apr. - 1 May	Graduate Conference	13(23)	16		Nijmegen	
10	Ethical Theory & Applied Ethics	EPF	20-24 Apr	Spring School ('old' winterschool)	13(7)	0	6	Barchum	
11	Design for Values	EPF	7-10 Apr	Course	7	0	5	Delft	



12	Religious Melancholy and Secularisation in Early Modern Europe	HP	20 Feb	Masterclass	-	-		Nijmegen	
13	35th Dutch-Flemish Day of Philosophy	OZSW	17 Jan	1-day Seminar	10	6	n/a	Groningen	

Figure 1 - OZSW Educational Program for PhD and Research master students and Number of Participants (between brackets the number of non-OZSW students participating)

4.3 Additional Information on Educational Activities

A substantial number of PhD and ReMa students have participated in mixed activities (see § 4.4). Some activities, however, were mainly or even exclusively focused on PhD students:

35th Dutch-Flemish Day of Philosophy (17 January 2015)

The OZSW has taken over the organization of the Dutch-Flemish Day of Philosophy, which runs annually since 1979 between various Dutch and Flemish universities. In 2015 the day was organized at the University of Groningen. It drew 52 participants, of which 16 were OZSW students. More information may be found here: <http://www.ozsw.nl/activity/35th-dutch-flemish-day-of-philosophy/>

Masterclass “Religious Melancholy and Secularisation in Early Modern Europe” (20 February 2015)

A one day Masterclass was organized by the section History of Philosophy and held at Nijmegen University. The number of participants was 4. More information about the event can be found at: <http://www.ozsw.nl/activity/religious-melancholy-and-secularisation-in-early-modern-europe/>

Course “Design for Values” (7-10 April 2015)

The graduate course “Design for Values” was organized at Delft University of Technology in cooperation with the 3TU Center for Ethics and Technology. The course drew 7 participants. More information about the course can be found here: <http://www.ozsw.nl/activity/design-for-values-2015-ozsw-and-3tu-ethics-graduate-course/>

Spring School Ethical Theory and Moral Practice (20-24 April 2015)

This 5-day Spring School at an external location is an introductory course of the OZSW section Ethics and Practical Philosophy. As in previous years, this course was organized by Utrecht University (UU). The Spring School drew 20 participants this year. More information on the program may be found at <http://www.ozsw.nl/activity/ozsw-springschool-2015-ethical-theory-moral-practice/>

Graduate Conference in Theoretical Philosophy (29 April 1 May 2015)

This 2-day Graduate Conference, organized by the Radboud University Nijmegen, was an activity of the OZSW section Theoretical Philosophy. Keynote speakers were Hanne Jacobs, Jennifer Lackey and James Ladyman. 36 PhD students and 16 ReMa students participated. There were presentations by PhD students both from the Netherlands and abroad, as well as a number of other participants. The program can be found here: <http://www.ozsw.nl/activity/gctp-2015/>

Summer School Collegium Spinozanum (7-10 July 2015)

This summer school was organized by the section History of Philosophy at University of Groningen. More information can be found here: <http://www.ozsw.nl/activity/summer-school-collegium-spinozanum/>.

Summer school Neurophilosophy: Self, science and society (10-14 August 2015)

This summer school was organized by the section Theoretical Philosophy at Radboud University Nijmegen. More information can be found here: <http://www.ozsw.nl/activity/summerschool-neurophilosophy-self-science-and-society/>

Summer School Emotions and Moral Agency (25-28 August 2015)

This summer school was organized by the section Ethics and Theoretical Philosophy at the Erasmus University Rotterdam. The summer school drew 24 PhD students and a remarkable amount (16) of international students. More information can be found here: <http://www.ozsw.nl/activity/emotions-and-moral-agency-2015/>

Symposium Diversifying Philosophy and recent trends in feminist thought (11-12 September 2015)

This 2-day event was hosted by the Vrije Universiteit Amsterdam in cooperation with the International Association of Women Philosophers (IAPh). It drew a total of 49 participants. More information of this event can be found here: <http://www.ozsw.nl/activity/symposium-diversifying-philosophy-recent-trends-in-feminist-thought/>

Course Woman Philosophers From Antiquity Until the 21th Century (September 2015)

This course was organized by the section History of Philosophy and hosted by the Vrije Universiteit Amsterdam. It drew 6 participants. More information can be found here: http://www.ozsw.nl/activity/women_philosophers/

Course Philosophy of Risk (November 2015)

This course was organized by the section Ethics and Practical Philosophy in cooperation with the 3TU Center for Ethics and Technology. It was hosted by Eindhoven University of Technology. It drew a total of 8 students. More information can be found here: <http://www.ozsw.nl/activity/philosophy-of-risk-2015/>

Course Philosophy of Responsible Innovation (November 2015)

This course was organized by the section Ethics and Practical Philosophy in cooperation with the 3TU center for Ethics and Technology. It was hosted by a number of Dutch Universities, of which two were non-OZSW faculties (University of Maastricht and Wageningen University). The course drew a total of 14 students. More information can be found here: <http://www.ozsw.nl/activity/philosophy-of-responsible-innovation-2015-ozsw-course/>

4.4 Final Remarks

A total of 28 ReMa participants has participated in OZSW activities in 2015. This relatively low number is partly due to the fact that the OZSW ReMa Winterschool 2015 was postponed to February 2016. A total of 15 EC's were awarded to ReMa students who participated in OZSW activities. A total of 44 EC's were awarded to ReMa master students who followed courses at another university than their home university, under the current OZSW exchange program.

Research Master Winter School

The OZSW organizes a yearly Winter School, which exclusively focuses on ReMa students. The ReMa winter school was not organized in 2015, but in February 2016 (in the academic year 2015/2016). The shift was made for reasons of alignment with the educational program of the ReMa students involved. The next OZSW Rema Winterschool will be organized early 2017 (academic year 2016/2017).

5. Research Collaboration and Outreach

5.1 OZSW Study Groups

The purpose of an OZSW Study Group is to develop collective research-related activities in a particular area of philosophy or on a specific philosophical topic. These activities consist of seminars, discussion sessions, reading groups and the like (see <http://www.ozsw.nl/study-groups/>).

At the end of 2015, the OZSW hosted 24 Study Groups, which means that in the course of 2015 five new Study Groups were established. At the end of 2015 the following were registered:

- Analytical Philosophy
- Aesthetics / Philosophy of the Arts
- Business Ethics
- Christian Philosophy
- Comparative & Global Philosophy
- Continental Philosophy
- Early Modern Philosophy
- Enactivism
- Ethics and Philosophy of Technology
- Ethics of Care & Health
- Environmental Philosophy (including sub-group on animal ethics)
- History of Dutch Scientific Philosophy
- History of Metaphysics: The Greek, Arabic, and Latin Traditions
- Klassieke Duitse Filosofie en haar Actualiteit
- Meta-Ethics & Moral Psychology
- MetaMetaphysical Club, The
- Philosophy and Psychiatry
- Philosophy around 1900 (including sub-group on phenomenology)
- Philosophy of Religion
- Philosophy of Responsibility
- Philosophy of Statistics
- Political Philosophy
- Theological Ethics
- Structuralism

5.2 OZSW Annual Conference

The OZSW's third Annual Conference took place on 11 and 12 December 2015. It was organized by Martin van Hees, Marije Martijn and Olga Lizzini at the Vrije Universiteit University Amsterdam. Keynote speakers were:

- Johan van Benthem (Logic)
- Sarah Broadie (History)
- John Broome (Practical Philosophy)
- Katherine Hawley (Theoretical Philosophy)

The number of abstracts received was 231, 166 of which were presented at the conference. Abstracts underwent a double blind review by senior OZSW members. The number of registered participants was 220.

Participants belonged to the following categories:

OZSW Conference 2015: Participants by affiliation

Dutch Universities

7	Delft University of Technology
8	Eindhoven University of Technology
23	Erasmus University Rotterdam
25	University of Groningen
9	Leiden University
1	Maastricht University
1	Protestant Theological University
12	Radboud University Nijmegen
3	Tilburg University
3	Twente University
41	Utrecht University
7	University of Amsterdam
24	VU University Amsterdam
6	Wageningen University
1	Open University
1	self-employed

International

3	AT
1	AUS
6	BE
1	CZ
3	DE
1	DK
1	IL
8	IT
5	SE
14	UK
5	USA
1	self-employed

Total 172

49

Per registration category

- 96 senior members
- 49 PhD student members
- 12 senior non-members
- 39 PhD student non-members
- 24 ReMa students

The conference was a meeting place for OZSW members. Besides academic presentations the program included a plenary OZSW member meeting, meetings of the 3 OZSW Section Committees with their section members, and a meeting of the OZSW PhD Council with PhD student members. The conference was highly instrumental for community building, as well as for the recognizability of the OZSW as a whole.

5.3 Outreach Activities

The OZSW organizes outreach activities, by facilitating a platform for discussion of societal issues or issues that concern broad developments in academia on a societal and political level. In 2015 the OZSW organized a debate called “Career Perspectives for Philosophy PhD students” in cooperation with Leiden University. The OZSW also supported the “Dag van de Milieufilosofie” (Environmental Philosophy Day).

In November 2014 the Dutch government announced her future scientific vision called *Wetenschapsvisie 2020*. The OZSW took up an active role in generating a critical response from academic philosophy in the Netherlands, with follow-up activities in 2015. In January 2015, a debate on this topic

was held in Utrecht. The KNAW held a roundtable meeting for PhD students on the future of science and invited the OZSW to send a PhD student representative. Fleur Jongepier represented the OZSW during this meeting, which was held on 1 May 2015.

6. Quality Assurance

6.1 Course Evaluations

A new evaluation template and technical procedure has been put in place to be able to track the quality of courses and activities. Previously the evaluation was done by means of a hardcopy form, which students had to fill in by hand at the end of each course. In the course of 2015, the OZSW designed a new template with adaptations to the content of the evaluation form, as well as a new procedure for doing the evaluation. The OZSW evaluations are now online forms, which are sent to the course participants after the course.

6.2 Mid-term Evaluation

In the year 2015, the Faculty of Philosophy at the Erasmus University Rotterdam, was subject to a mid-term research evaluation, in anticipation to its full Standard Evaluation Protocol (SEP) in 2018. The OZSW is being evaluated as part of the faculty evaluation. For this reason, we filled out the designated paragraphs for research schools in the mid-term document. Although the OZSW will not be hosted by the Erasmus University Rotterdam in 2018, we decided to join the mid-term evaluation in order to provide the hosting university after 31 December 2017 with a draft document based on the SEP format.

6.3 LOGOS Evaluation

LOGOS, the umbrella organization for research schools in humanities in the Netherlands, invited the OZSW to perform a self-evaluation. This self-evaluation formed the basis for further evaluation by the *Disciplineoverleg Letteren en Geesteswetenschappen* (DLG).

7. Finances

7.1 General

The financial situation of OZSW is being aligned with the hosting university through SAP, which is an automated invoice processing system that serves as a basis for the financial report.

7.2 Financial Statement

The full OZSW Financial Report for 2015 may be obtained from [assistant.director@ozsw.nl] at the OZSW office in Rotterdam.

7.3 Extra Costs

The OZSW planned to run a small loss in 2015. This loss was to be covered by the reserves which the OZSW inherited from the former OZSE. However, at the end of 2015, the reserves had further increased. This was due to the new constellation of the OZSW Office as well as to the fact that fewer educational activities were held than had initially been budgeted.

7.4 Budget Plans for 2016-2017

In the wake of ongoing discussions with the *Disciplineoverleg Letteren en Geesteswetenschappen* (DLG), as well as the *Regieorgaan Geesteswetenschappen*, about new guidelines for financial and organizational aspects of ReMa activities, and in view of the possibility that OZSW might not fit the criteria for financial support of ReMa educational programs and office costs, both the OZSW Schoolbestuur and the OZSW Voorzittersoverleg have, in the course of the year, discussed long term financial policies. These discussions were also prompted by new guidelines for financial support of *onderzoeksscholen* from SODOLA and VSNU, as well as new estimates concerning the staffing of the OZSW Office. As for the latter, it is the view of the scientific director that, with the fast growing numbers in OZSW membership and activities, the workload of the assistant director in particular called for a reconsideration of her appointment.

The outcome of these discussions have been the following: (1) over the next year, the scientific director and the assistant director will reassess the office workload in order to present a reasoned proposal with regard to the necessary operating hours for 2016; (2) for the period 2015-2017, all possible extensions of office appointments, as well as other minor financial deficits, will be complemented by calling on the OZSE financial reserves; (3) on the basis of all relevant information, a new proposal for annual contributions by the OZSW founding partners will be presented to the Schoolbestuur in the spring of 2017, in order to safeguard a healthy financial situation for the 2018-2022 period.

8. Conclusion and Future Vistas

The OZSW looks back on a successful year – and a year of considerable growth, both in respect of members and study groups and in respect of organised events.

At the end of 2015, no less than 24 Study Groups were active within OZSW. With respect to the growing number of educational activities, moreover, agreements have been made to work towards a further harmonization of activities. Sharp criteria for the organisation of OZSW Courses are now in place. Also, in order to improve evaluation procedures with respect to our educational events, a standard evaluation form has been established that will be used as a basis for assessing the quality of our activities.

On behalf of PhD-students active in philosophy in the Netherlands, initial steps have been taken in consultation with the OZSW PhD-council to support individual junior researchers in case of conflicts arising with respect to the supervision of their research projects, as well as to inform and instruct junior researchers on questions of career perspectives.

On behalf of Research Master students in philosophy in Groningen, Amsterdam, Utrecht, Nijmegen and Rotterdam, consultations with local Research Master coordinators have led to arrangements having been made to provide better information about the possibilities for student exchange and to encourage Research Master student to take courses in one of the other member institutes.

In the coming years, the OZSW plans further to enlarge the number of its educational activities, especially in Theoretical Philosophy and History of Philosophy.

Other intended future initiatives include:

- (1) to increase PhD and Research Master student participation in OZSW educational programs;
- (2) to increase the involvement of students and scholars in OZSW activities by focusing on our relation with (junior) researchers on a more personal level, by increasing our physical presence at activities and meetings of the OZSW, by handing out certificates, by attending promotions and inaugural lectures, and by congratulating members with their academic achievements on behalf of the OZSW;
- (3) further to develop policies of internal quality control on the basis of the new course assessments;
- (4) to develop OZSW policies for internships and training programs for junior academics.

In order to enable a successful implementation of all of these aims, as well as to continue to perform its present tasks, an extension of the position of the Assistant Director is scheduled for 2016 to the extent that Dr. Christine Boshuijzen will be given an extra half a day (0,1 fte) a week.

The OZSW President, the OZSW Scientific Director and the Rotterdam Office are all committed to ensuring that, during its final two years at Erasmus University, the OZSW will work towards a swift and smooth transfer of its operations to one of the other member institutes in the country as of 1 January 2018.

Finally, the OZSW will continue to promote public funding of research in philosophy at Dutch universities, to justify such funding to external parties, and to contribute to the visibility of the discipline of philosophy in general.